

Mumbai Eastern Waterfront

# MARITIME MUSEUM

Development Project

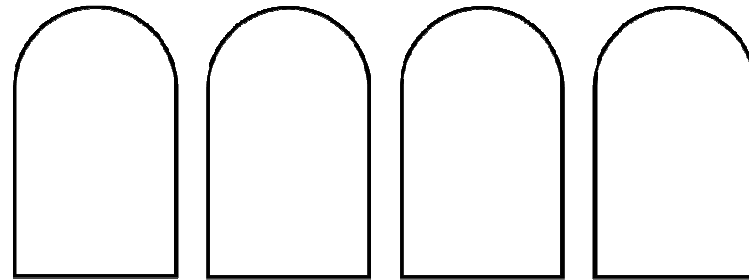


Donghia Masters Class 2020 | Nichole Na, Josh Haag, Nick Farzan

# GHARIAL GHAR

*Traffic House*

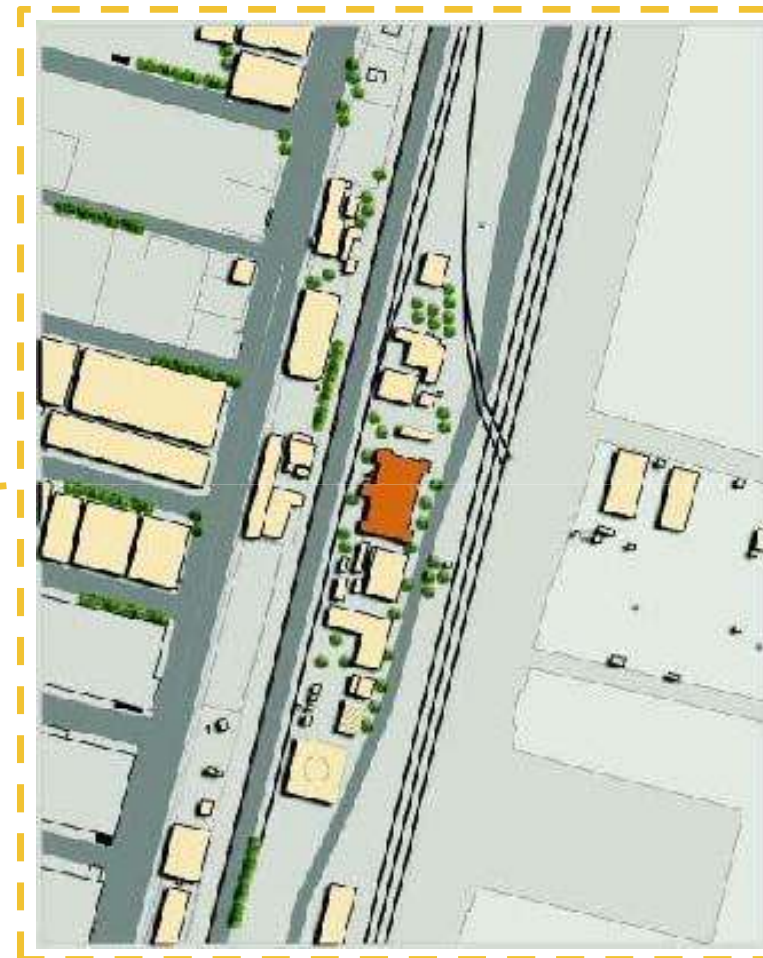
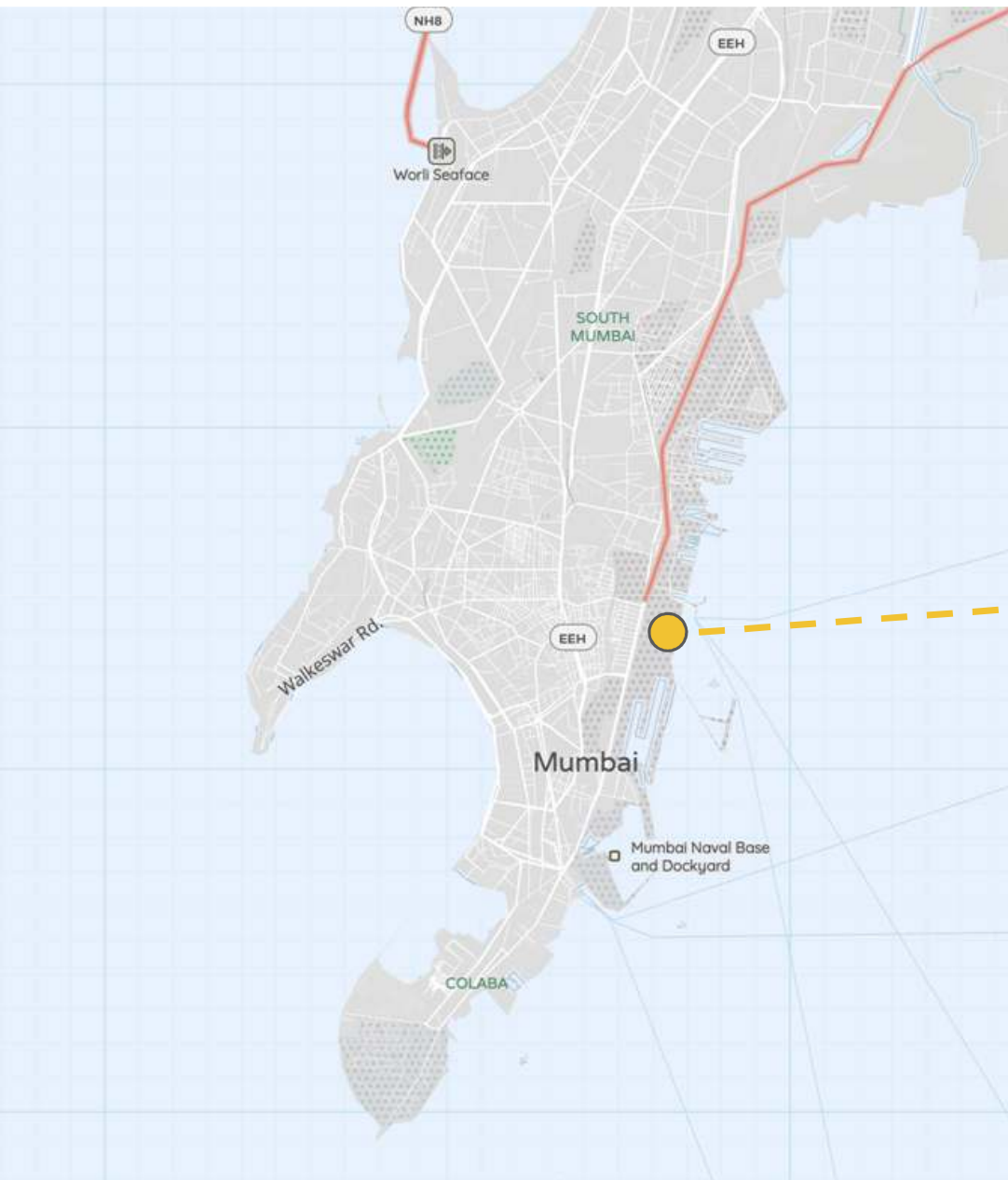
SITE #1



BUILT 1890



*P & V Traffic Office 1890*



SITE MAP

# EXISTING CONDITIONS



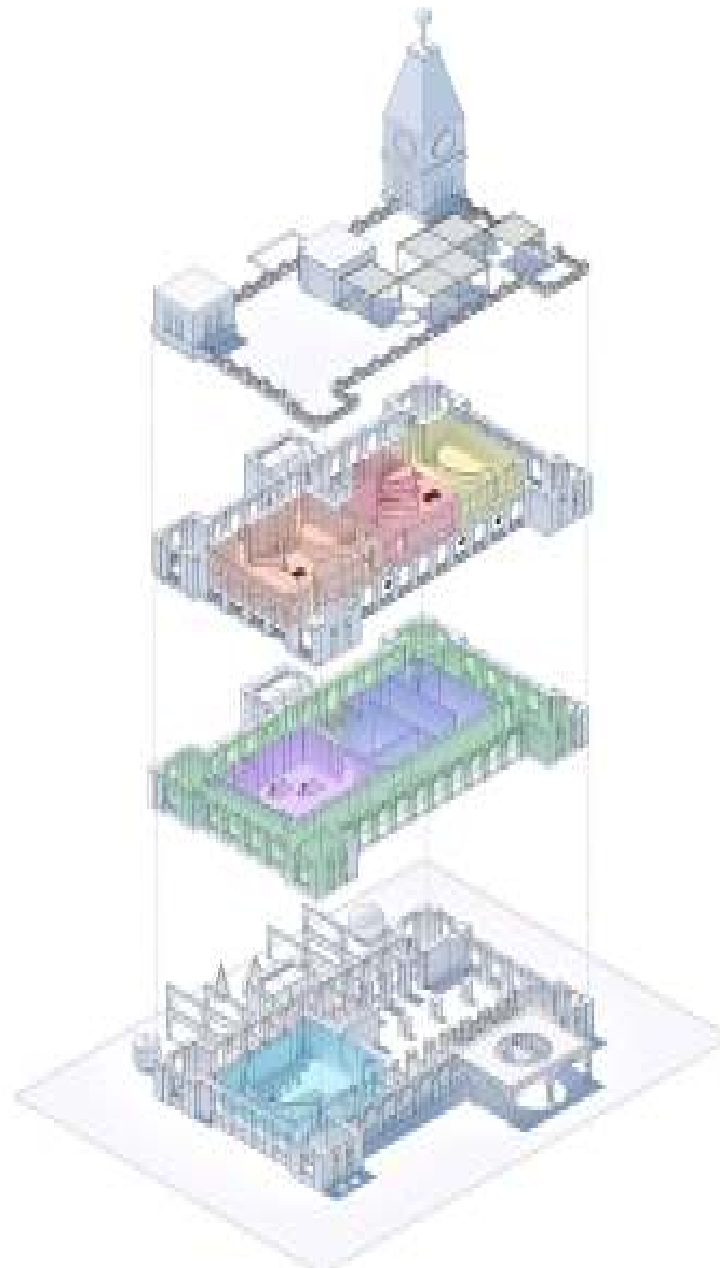
# DESIGN PROPOSAL

The traffic house site will be home to the historical elements of the three museums, and will include artifacts and displays of Mumbai maritime history. The concept for the design comes from the historical architectural features found in the original british colonial architecture. Archways are seen as an influential and repeating element throughout the design. The semicircle shape of the arch will be used as a symbol that bridges the historical with the contemporary. Creating a space within that activates the community and brings people together to learn, experience, and interact with the exhibits. Staying true to the historical integrity and beauty of the original building is key while providing flexible arrangements of programming throughout each of the zones.

# 7 Exhibits

Each exhibit is represented by the 7 different islands that made up Mumbai before the land was merged together in the early 19th century.





### Legend

- Women's Contributions in Mumbai Exhibit
- Navigation and Classical Sea Voyages Exhibit
- Ports and Maritime Trade Exhibit
- Oceanography Exhibit
- Shipbuilding Exhibit
- Conflicts, Piracy, and Low Intensity Conflicts Exhibit
- Maritime Communities Exhibit

### EXPLODED AXONOMETRIC

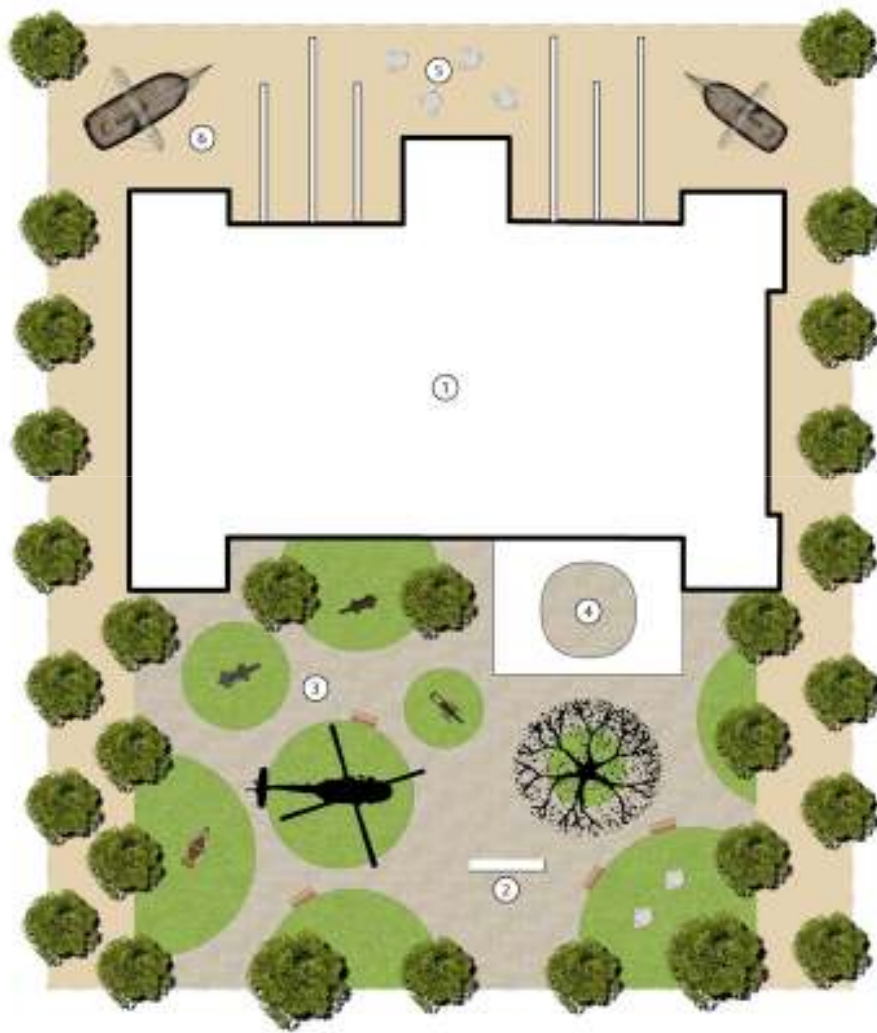
- Displaying the 7 zones of exhibition space in relation to each floor level



# GROUND FLOOR

## PROGRAMMING

- Entry / Exit
- Gift Shop
- Lobby
- Maritime Communities Exhibit
- Male / Female Restrooms



KEY	
①	GENERAL GEAR
②	MUSEUM SIGN
③	OUTDOOR EXHIBIT
④	ENTRANCE
⑤	TEST AREA
⑥	REAR EXHIBIT

MATERIALS LIST	
	TRILY
	DECOMPOSED GRANITE
	GRASS

LANDSCAPE PLAN   
 SCALE: 1:20

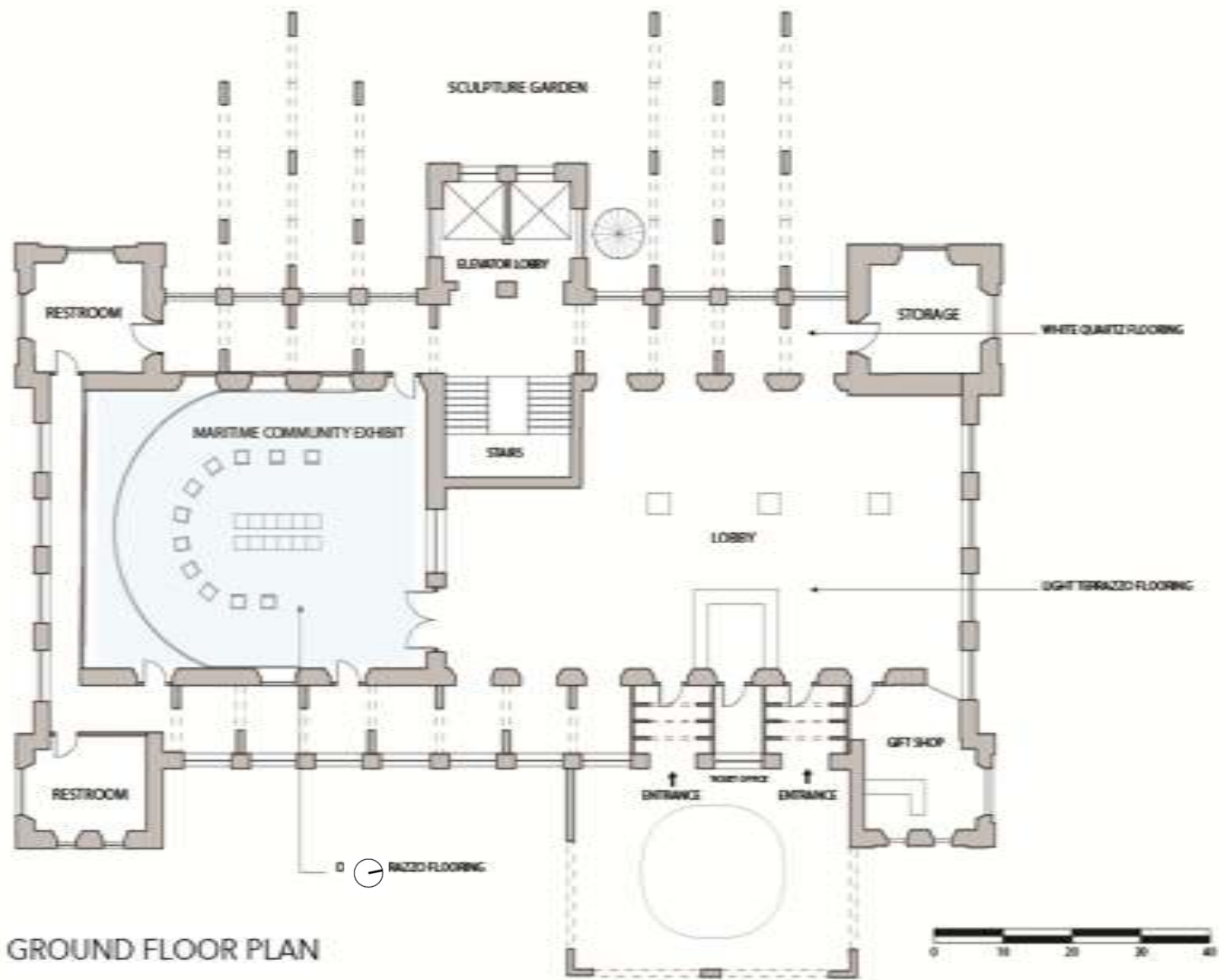
## INSPIRATION



Wraparound LED Screen



Architectural Arches



GROUND FLOOR PLAN



MARITIME COMMUNITY EXHIBITION

# FIRST FLOOR

## PROGRAMMING

- Ship Building Exhibit
- Oceanography Exhibit
- Conflicts, Piracy and Low Intensity Conflicts Exhibit

## INSPIRATION



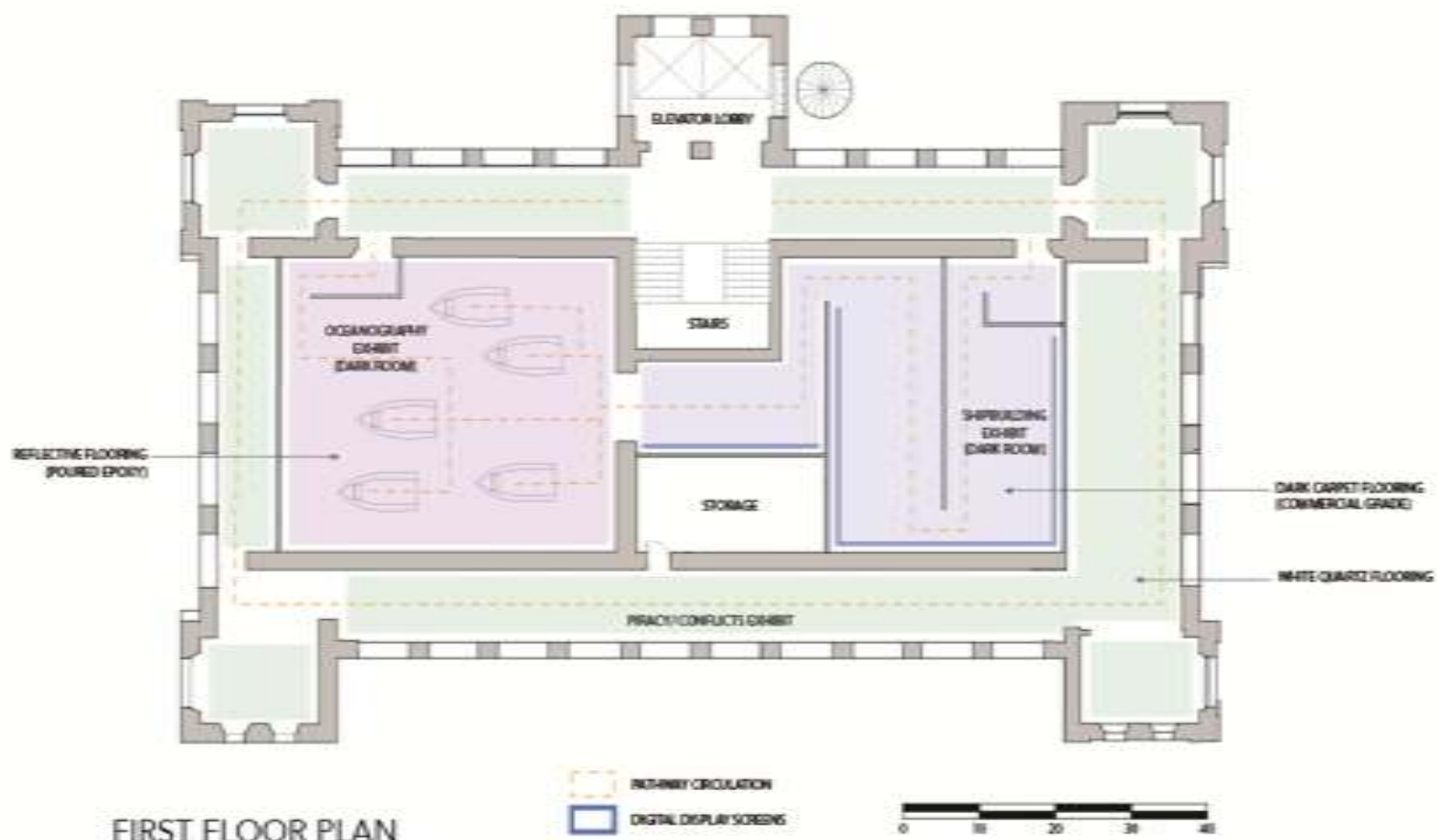
LED Light Displays



Projected Light Screens



Wraparound Timeline



FIRST FLOOR PLAN

- MAINWAY CIRCULATION
- DIGITAL DISPLAY SCREENS

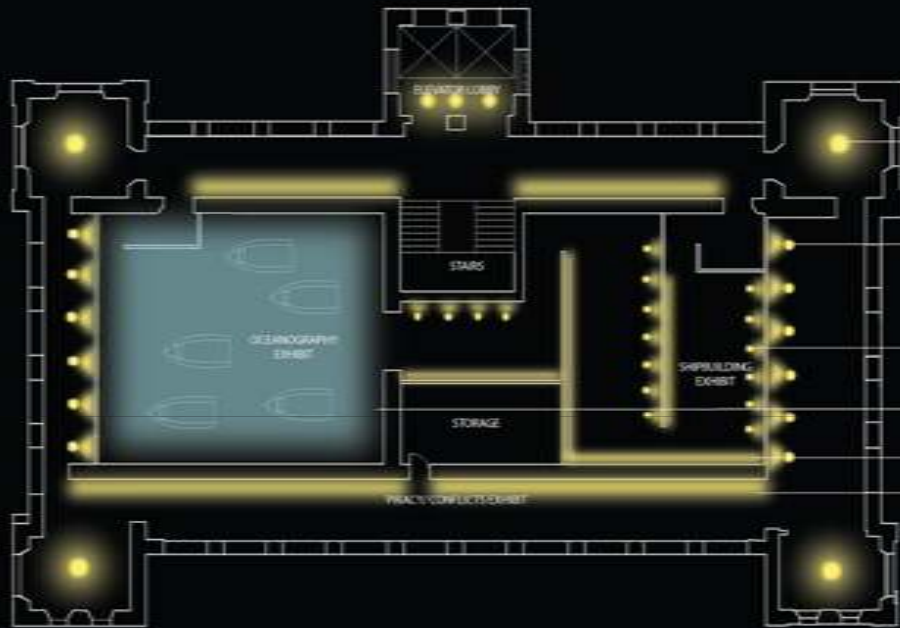






## OCEANOGRAPHY EXHIBITION

- The feeling of being underwater with a high reflective floor surface and rippling water wall/ceiling light projections. Fixtures in the shapes of boats act as interactive information centers that dual as bench seating.



LIGHTING CONCEPT



GENERAL LIGHT

ACCENT LIGHTING

TRACK LIGHTING

LED CEILING

LED SCREENS

WALL WASH



SHIPBUILDING EXHIBIT



OCEANOGRAPHY EXHIBIT



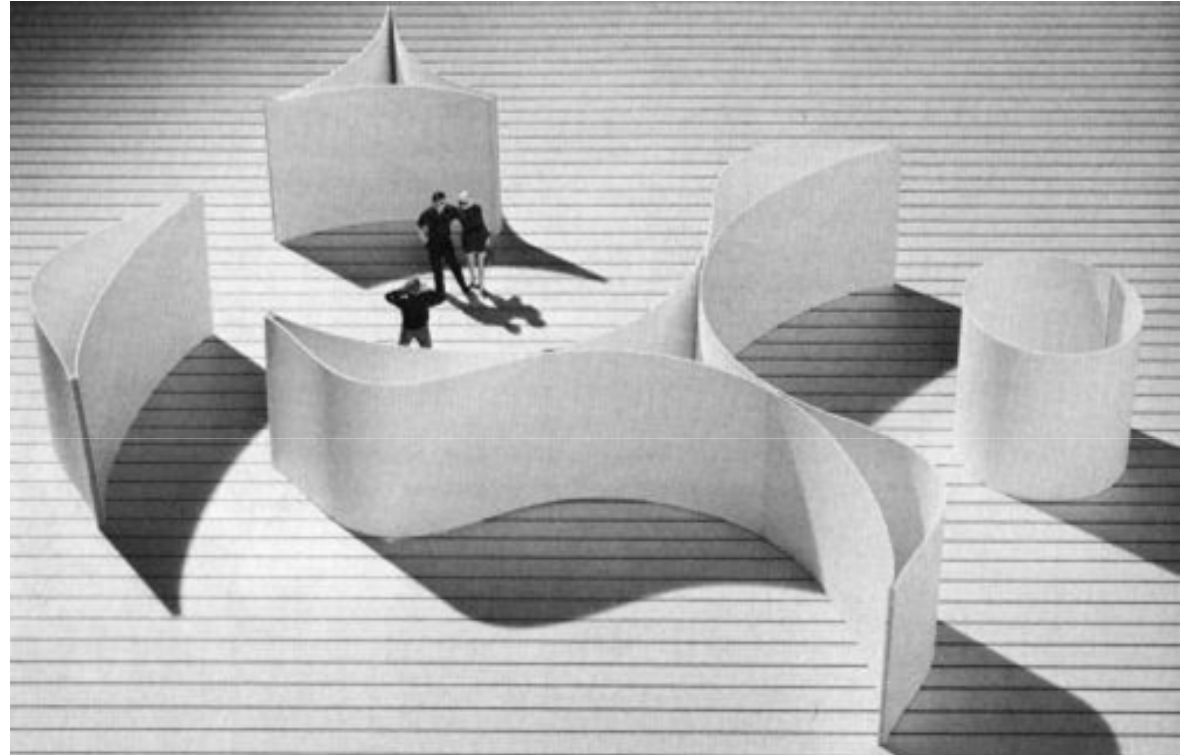
PIRACY/ CONFLICT EXHIBIT

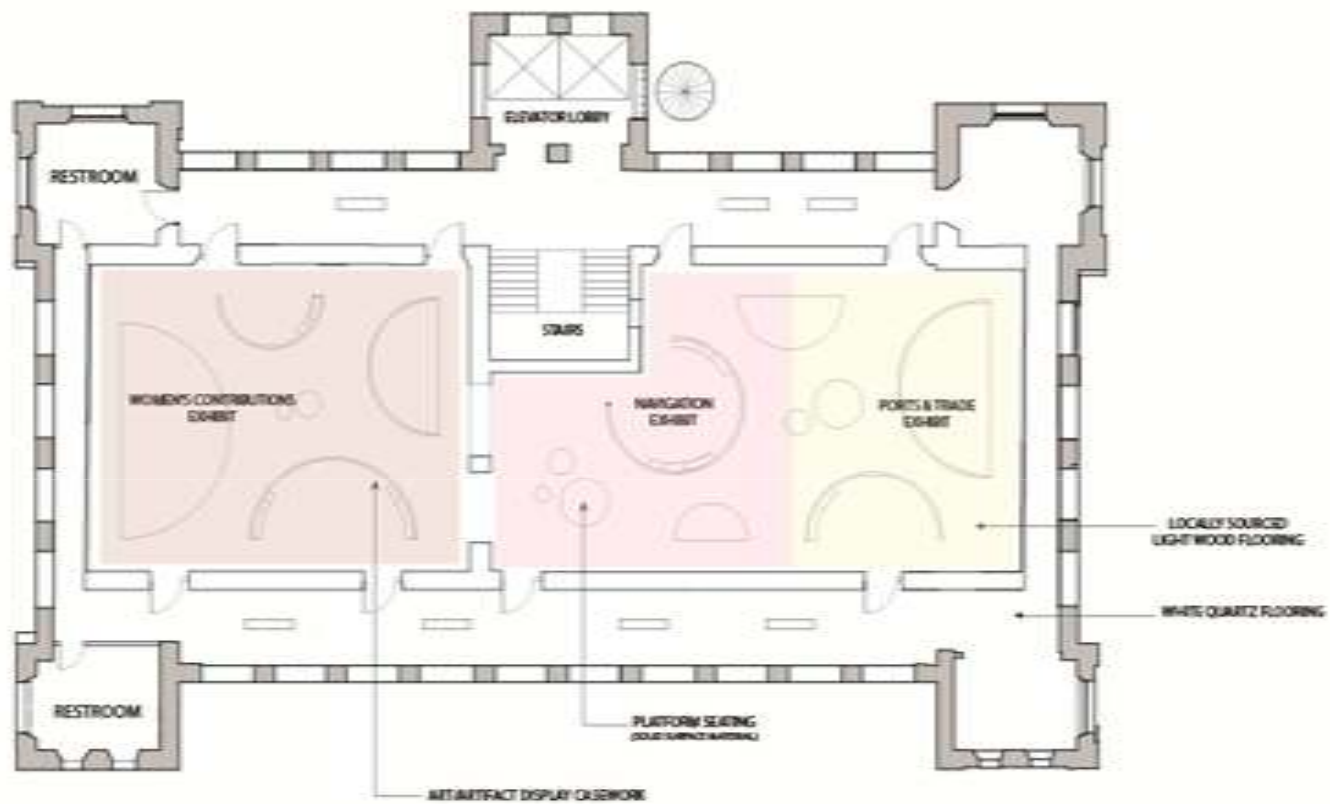
# SECOND FLOOR

## PROGRAMMING

- Ports and Maritime Trade Exhibit
- Navigation and Classical Sea Voyages Exhibit
- Women's contributions in mumbai Exhibit
- Male / Female Restrooms

INSPIRATION

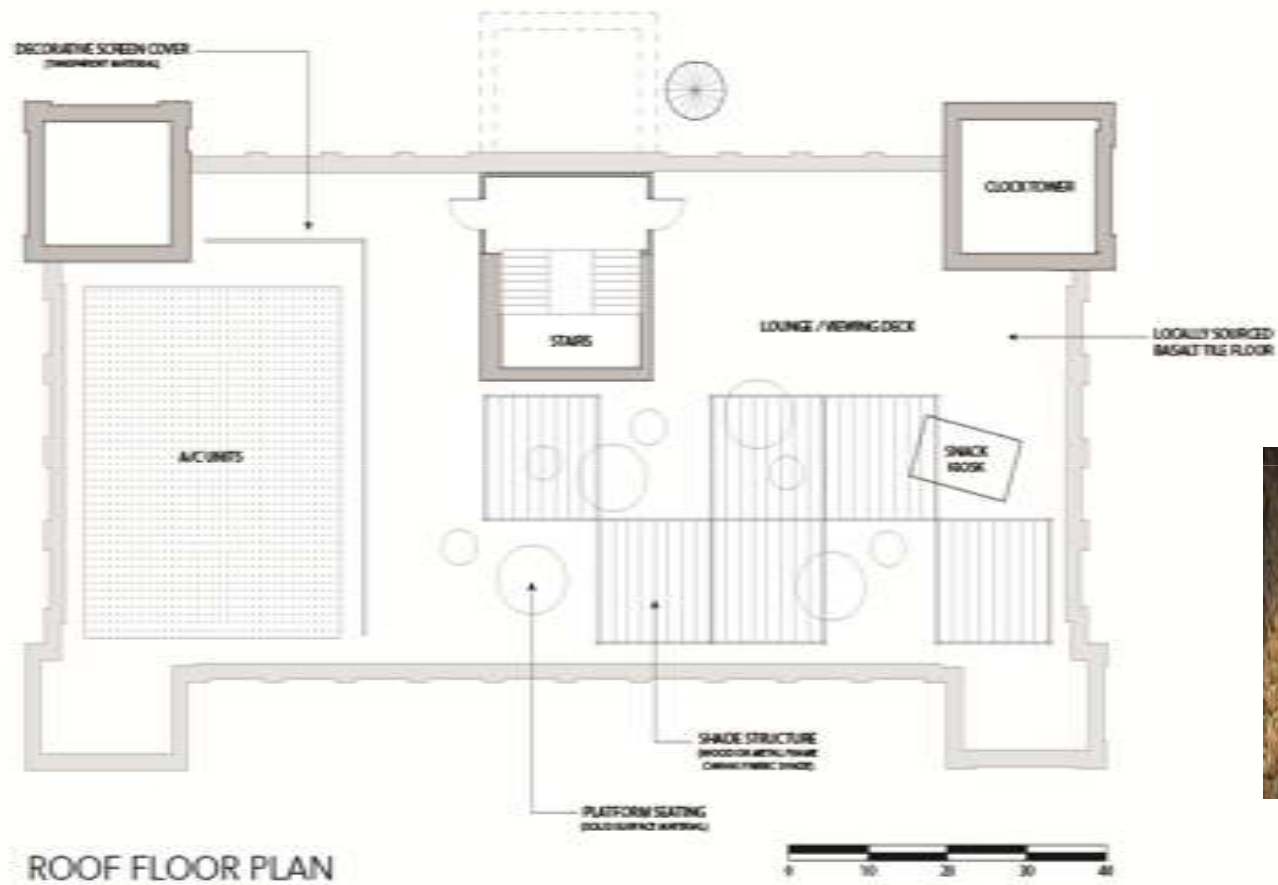




SECOND FLOOR PLAN





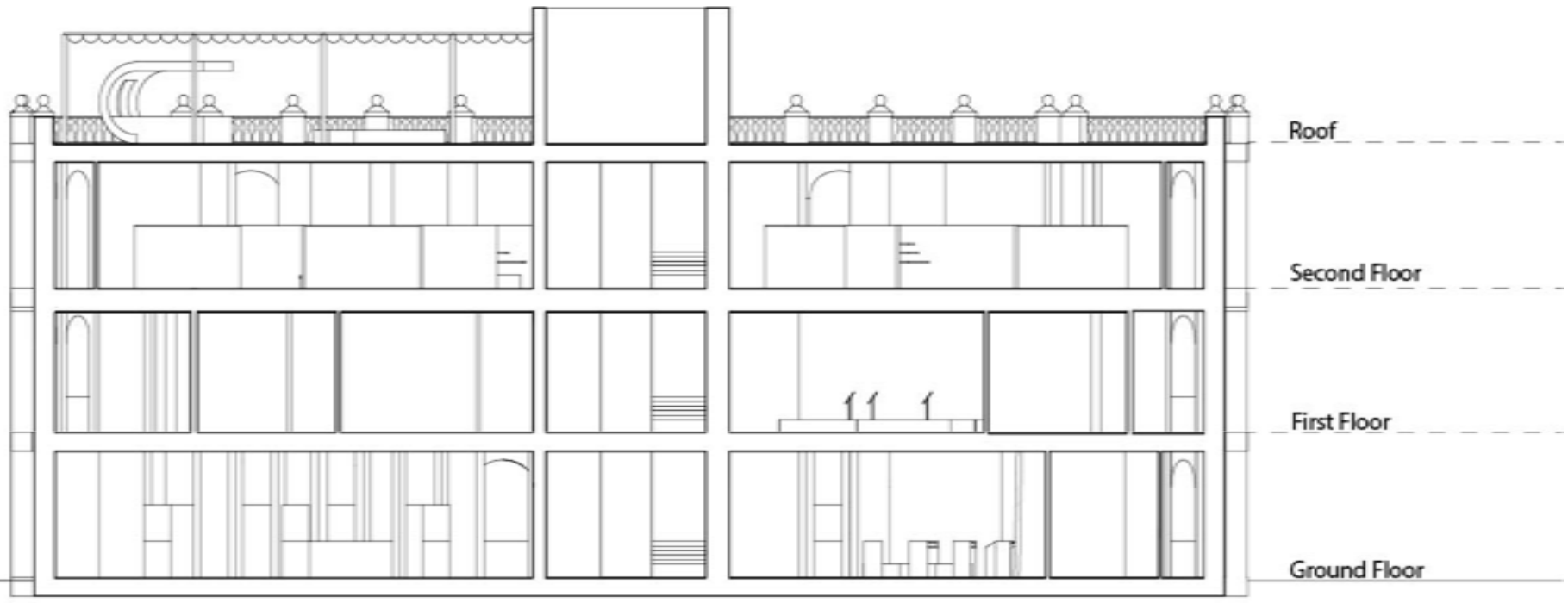




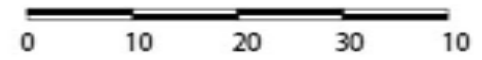
## TERRACE VIEW

- Lounge platform seating for an informal seating arrangement. Featuring a snack bar kiosk in the form of an archway on its side.





SECTION



# CONCLUSION

Our goal with our design is to create a dynamic space that creates interest and provides something special for the community to be proud of.

THANK YOU

Donghia Masters Class 2020 | Nichole Na, Josh Haag, Nick Farzan